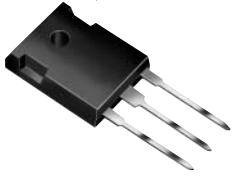




MBR4035PT thru MBR4060PT

Vishay Semiconductors
formerly General Semiconductor



Dual Schottky Barrier Rectifier

Reverse Voltage 35 to 60V
Forward Current 40A

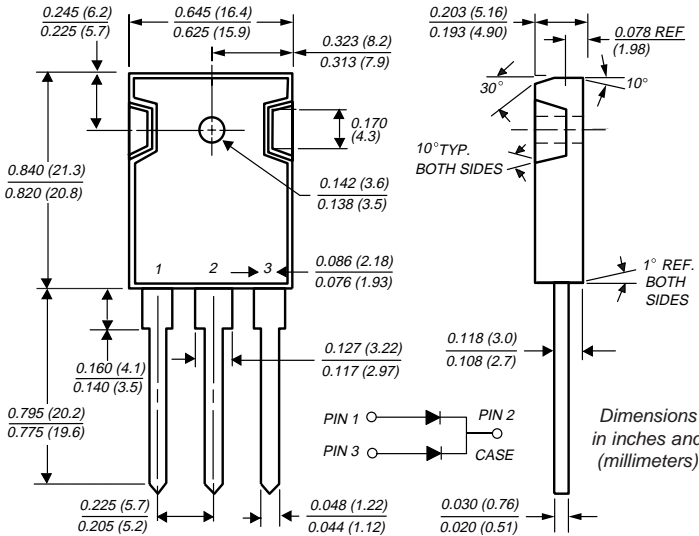
TO-247AD (TO-3P)

Features

- Plastic package has Underwriters Laboratory Flammability Classifications 94V-0
- Dual rectifier construction, positive center-tap
- Metal silicon junction, majority carrier conduction
- Low power loss, high efficiency
- High current capability, low forward voltage drop
- High surge capability
- For use in low voltage, high frequency inverters, free-wheeling, and polarity protection applications
- Guardring for overvoltage protection
- High temperature soldering guaranteed: 250°C/10 seconds, 0.17" (4.3mm) from case

Mechanical Data

- Case:** JEDEC TO-247AD molded plastic body
Terminals: Lead solderable per MIL-STD-750, Method 2026
Polarity: As marked
Mounting Position: Any
Mounting Torque: 10 in-lbs max.
Weight: 0.2 oz., 5.6 g



Maximum Ratings & Thermal Characteristics Ratings at 25°C ambient temperature unless otherwise specified.

Parameter	Symbol	MBR4035PT	MBR4045PT	MBR4050PT	MBR4060PT	Unit
Maximum repetitive peak reverse voltage	V_{RRM}	35	45	50	60	V
Maximum working peak reverse voltage	V_{RWM}	35	45	50	60	V
Maximum DC blocking voltage	V_{DC}	35	45	50	60	V
Maximum average forward rectified current at $T_C = 125^\circ\text{C}$	$I_{F(AV)}$	40				A
Peak repetitive forward current per leg at $T_C=120^\circ\text{C}$ (rated V_R , square wave, 20 KHz)	I_{FRM}	40				A
Peak forward surge current, 8.3ms single half sine-wave superimposed on rated load (JEDEC Method)	I_{FSM}	400				A
Peak repetitive reverse surge current (NOTE 1)	I_{RRM}	2.0		1.0		A
Maximum thermal resistance from junction to case per leg	$R_{\theta JC}$	1.2				$^\circ\text{C}/\text{W}$
Voltage rate of change at (rated V_R)	dv/dt	10,000				$\text{V}/\mu\text{s}$
Operating junction temperature range	T_J	-65 to +150				$^\circ\text{C}$
Storage temperature range	T_{STG}	-65 to +175				$^\circ\text{C}$

Electrical Characteristics Ratings at 25°C ambient temperature unless otherwise specified.

Parameter	Symbol	MBR4035PT	MBR4045PT	MBR4050PT	MBR4060PT	Unit
Maximum instantaneous forward voltage per leg at: (NOTE 2) $I_F = 20\text{A}, T_C = 25^\circ\text{C}$ $I_F = 20\text{A}, T_C = 125^\circ\text{C}$ $I_F = 40\text{A}, T_C = 25^\circ\text{C}$ $I_F = 40\text{A}, T_C = 125^\circ\text{C}$	V_F	0.70		0.72		V
Maximum instantaneous reverse current at rated DC blocking voltage per leg (NOTE 2)	I_R		1.0		100	mA

Notes: (1) 2.0 μs pulse width, $f = 1.0\text{ KHz}$
(2) Pulse test: 300 μs pulse width, 1% duty cycle

MBR4035PT thru MBR4060PT



Vishay Semiconductors
formerly General Semiconductor

Ratings and Characteristic Curves (T_A = 25°C unless otherwise noted)

Fig. 1 - Forward Current Derating Curve

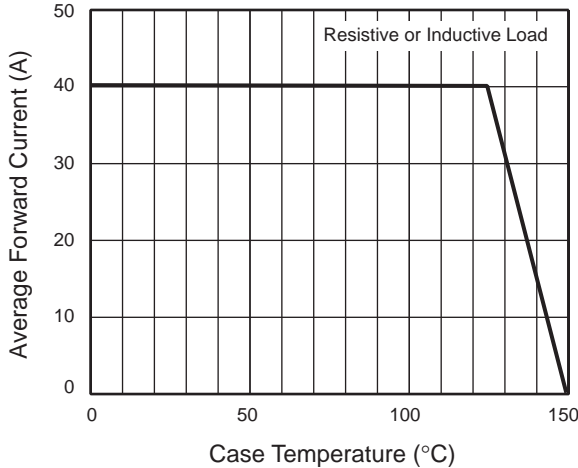


Fig. 2 - Maximum Non-Repetitive Peak Forward Surge Current Per Leg

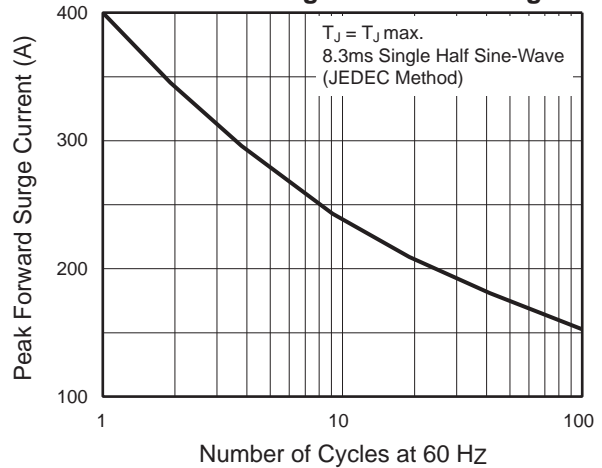


Fig. 3 - Typical Instantaneous Forward Characteristics Per Leg

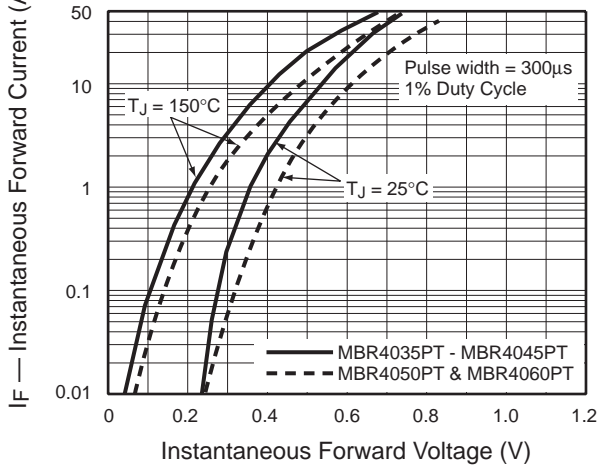


Fig. 4 - Typical Reverse Characteristics Per Leg

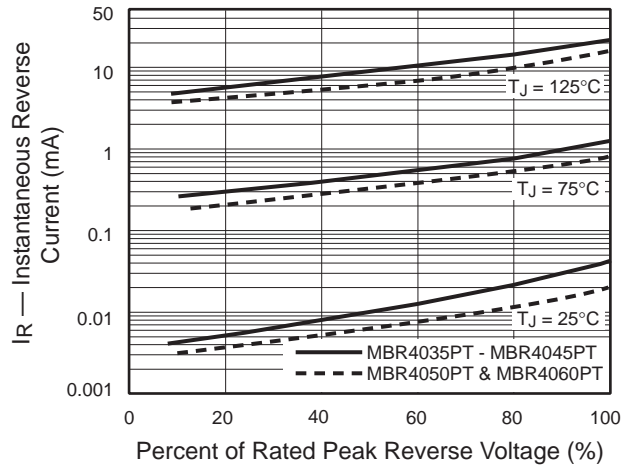


Fig. 5 - Typical Junction Capacitance Per Leg

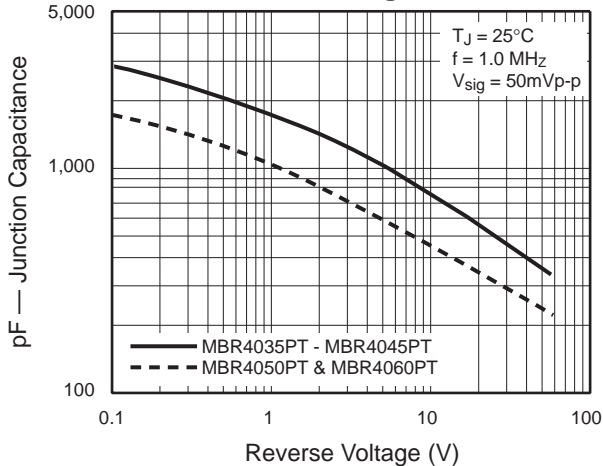


Fig. 6 - Typical Transient Thermal Impedance Per Leg

